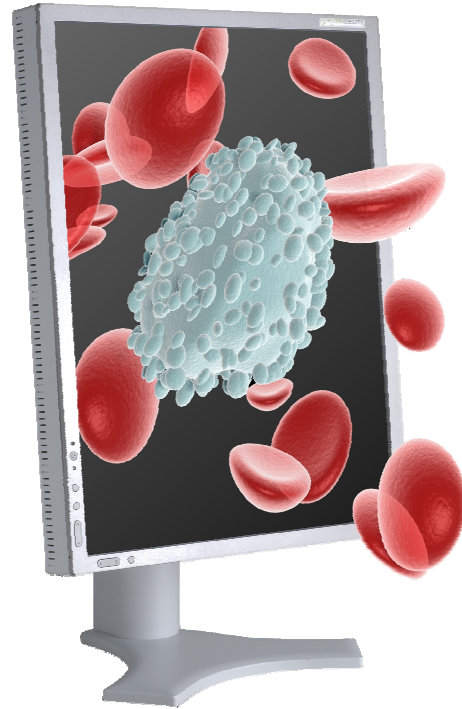




## Datasheet

autostereoscopic  
Single-Viewer  
3D-display

# SV2100S



<b>Optical</b>	Size (diagonal)	21,3" (54cm)
	Size (active area)	12.8" x 17"
	Format	3:4 portrait
	3D-views	2
	3D-technology	parallax-barrier
	Optimal viewing distance	approx. 28"
	Pixel per view	960.000 RGB-Pixel
	Native resolution (total)	UXGA (1200 x 1600 RGB-Pixel)
	Native brightness of panel	250cd/m <sup>2</sup> typ.
	Native contrast ratio	500:1 typ.
	Colors	16,77 M (8bits RGB)
	Response time (ton+toff)	10 ms typ. (grey to grey)
	Panel technology	a-Si TFT, S-IPS



# TRIDELITY®

DISPLAY SOLUTIONS LLC

TRIDELITY Display Solutions  
 2500 Plaza 5, 25<sup>th</sup> Floor  
 Jersey City, NJ 07311  
 Phone 1 877-314-9494  
 Phone 1 201-322-3600  
[www.tridexterity.com](http://www.tridexterity.com)  
[info@tridexterity.com](mailto:info@tridexterity.com)

<b>Physical</b>	Outer Dimensions (W x H x D)	14.2" x 18.3" x 3.4" (without stand) 14.2" x 18.9"-24.8" x 9.7" (incl. stand)
	Weight	20.3 lbs (without stand) 26 lbs (incl. stand)
	Wall mounting	VESA 100
	Table stand	detachable height / tilt / swivel adjustable
	Operating conditions	41° - +95° F 30%-80% rel. humidity (non-condensing)
	Storage conditions	+14° - +140° F 10% - 85% rel. humidity (non-condensing)

<b>Electrical</b>	Power input	100V - 240V AC 50/60Hz
	Power consumption	50 W typ.
	Signal inputs	DVI-I DVI-D analog HD-15

<b>miscellaneous</b>	Accessories	Power cord DVI-D to DVI-D signal cable HD-15 to DVI-A signal cable user manual
	Approvals	CE
	Software compatibility	Please contact TRIDELITY for detailed information
	Package dimensions (W x H x D)	23.6" x 23.2" x 15.7"
	Package weight	34.2 lbs

Specifications subject to change without notice  
 © 2007 - 2009 TRIDELITY Display Solutions LLC